



# *N* Church of the *Nativity*

## **Renew • Repair • Restore**

For the past two years a 19-member parishioner-based committee and the Parish Council have been meeting to discuss enhancements, refinements and possible building additions to our Parish facilities.

In brief, the summary of their work calls for a three-story addition to the school, new administrative offices, enhanced entrance (portico) to the Church, remodeled parish hall and an outdoor kitchen and courtyard off the parish hall. The plan also calls for possible changes to existing liturgical furnishings in the Church, such as Stations of the Cross, Altar, Chair, Ambo, Baptistry, etc., in addition to the basics of lighting, sound and pew refurbishing.

Another very important component of the renovation will be a plan to repair leaks in the existing Church roof.

Possible other additions include an Adoration Chapel and free-standing Bell Tower to the south of the main Church entrance.

Meetings between Parish and Finance Council members concluded that our first priorities are the school addition, administrative offices, portico, parish hall remodelling and outdoor kitchen / courtyard. Cost estimates for these additions are \$7.4 million. Constructing the Adoration Chapel and Bell Tower would bring the total project cost to \$9.5 million.

In an effort to share the reasoning and details behind this work, parishioners are invited and encouraged to attend informational Town Hall meetings after Masses on Saturday, March 8, Sunday, March 9 and on the evening of Wednesday, March 12. Parishioners are also encouraged to speak one-on-one directly with representatives from the Steering Committee, Parish Council and Finance Council.

Based on parishioner feedback received from Town Hall meetings and conversations with and between parish

leadership, a plan will be finalized to construct and renovate as needed. Feasibility studies will be ordered and once a parishioner consensus is obtained, final permission to proceed will be obtained directly from Archbishop Naumann.

### School Addition

Details on these additions are as follows: The proposed school addition would be a 15,000 square foot three-level, six classroom addition located on the northwest portion of our campus. The building would house approximately 130 seventh and eighth grade students currently located in windowless classrooms below the existing Activity Center (gym). The addition will enable the school to relocate these students to an environment more conducive to learning and offers the ability to expand course offerings such as Spanish, art, mathematics, technology, science, etc., in existing classrooms below the Activity Center. The lower walk-out level of this classroom addition will remain unfinished for future needs.



*School Addition viewed from the south. Activity center doors are to the right.*



*School Addition viewed from the west.*

### Office Addition

Additions at the Church call for the construction of a 4,400 square foot administrative office connected to the lower level of the existing Church. This addition will house all Parish staff currently located throughout the campus. The addition will centralize services and includes conference rooms, work rooms and a reception area.



*Parish Office addition viewed from the north.*

### Church Interior Renovations

In addition to enhancing the basics of adequate sound, lighting and HVAC needs, potential renovations to the interior of the Church will address the existing liturgical furnishings, handicap accessibility to the Altar, pew refurbishing, Stations of the Cross and reconciliation and vesting rooms.



### Parish Hall Expansion

After new administrative offices are constructed the Parish Hall can be expanded into space occupied by the old offices. These changes will include - but are not limited to - relocating and enhancing the nursery, kitchen and storage areas. Other amenities will include conference rooms, carpeting, lighting, sound, furniture, tables, chairs, kitchen equipment, etc.

*Parish hall floor plan; one of many configurations of the remodeled hall.*

## Portico

A portico at the main east entrance to the Church will provide covered shelter not currently available to parishioners entering and exiting the building. In addition to expanded shelter, the portico would provide a more welcoming entrance and covered outdoor gathering space for parishioners.

## Courtyard and Outdoor Kitchen

A courtyard and outdoor kitchen are planned just to the west of the Parish Hall. These facilities will support larger gatherings for social and outdoor functions.



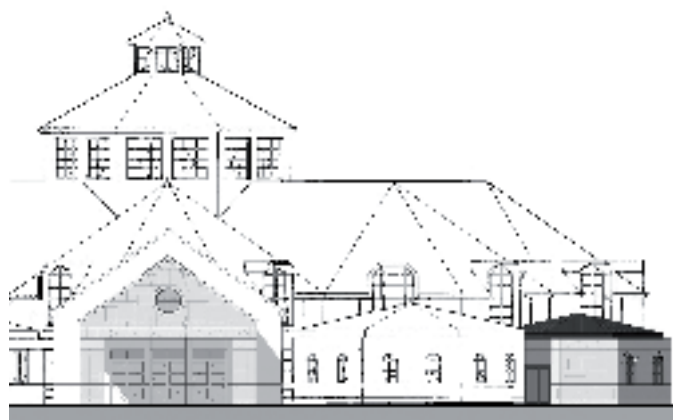
*Parish Hall Courtyard, from above*



*Cooking gazebo*

## Adoration Chapel

Our existing chapel does not provide the opportunity for 24-7 perpetual Adoration nor does it provide adequate space for ministries to gather and prepare for daily and weekly Mass. The Adoration Chapel would include secure 24-hour access and dedicated worship space. It will be located on the northeast corner of the Church.



*Portico*

*Adoration Chapel*

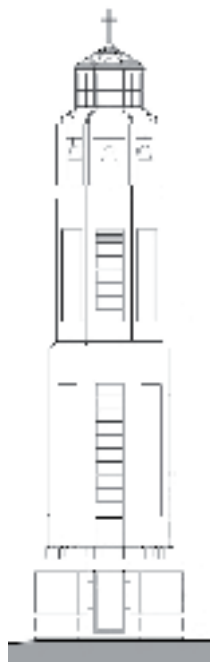
## Bell Tower

When the Church was first planned a Bell Tower was included as an amenity to “complete” the parish campus. The Bell Tower was approved by the City but never erected. Should funds become available, a tower of the same design would be constructed.

## East Parking Lot

Current parking configurations result in congestion in the drive in front of Church and at the East 119th entrance. In addition, parishioners are forced to walk between vehicles, rather than in open aisles or sidewalks. A potential revision of the Church’s east parking lot calls for placement of additional landscaping islands, re-routing vehicle flow, and adding an enhanced walkway to the Church entrance.

*Parishioners are also encouraged to speak one-on-one directly with representatives from the Steering Committee, Parish Council and Finance Council.*



*Bell Tower*

**Additional Town Hall Meeting  
Wednesday, March 12 at 7 p.m. in the Parish Hall**

***Pastoral Council***

James E Taylor (chair)	816.225.6666	Randy Huber	345.9418
Marta Buser	681.2796	Ann Kranz	681.6445
Barb Gangel	963.2805	Keith Lilek	244.8770
Bob Gillis	491.0572	Chuck Sipple	814.7328
Michael Hagen	498.8301	Mary Thompson	661.9040
Fred Heid	685.1771	Drew Pearson	661.1762
Dan Heiman	317.8282		

***Finance Council***

Mike Gangel (chair)	498.1172	Gary Kilkenny	491.9255
Chris Abbick	451.4971	Kellen Kornell	338.5549
Robert Bridgham	491.1274	Ralph Schramp	816.942.0357
Steve Clifford	681.6431	Nancy Streit	424.9571
Lenette Crawford	345.9916		

***Steering Committee***

Jake Jacobsen (Chair)	239.9177	Bette Borghi	677.6642
Dr. Paul Camarata	685.2376	Mike Nolte	897.2322
Nancy Streit	424.9571	Dick Corrigan	338.2647
John Snyder	816.460.2668	Anne Godsey	317.8895
Dave Evers	491.9456	Tracy Boschert	469.4344
Jean Stump	897.4887	Stephanie Jancich	338.4330
Linda Smith	661.7150	Karen Thompson	338.4050
Lori Plank	814.0577	Dr. Bob Thompson	338.4050
Tim Plank	814.0577		